

VILHELMINA
RNP RWY 10

EGNOS Ch 94406 E 10A

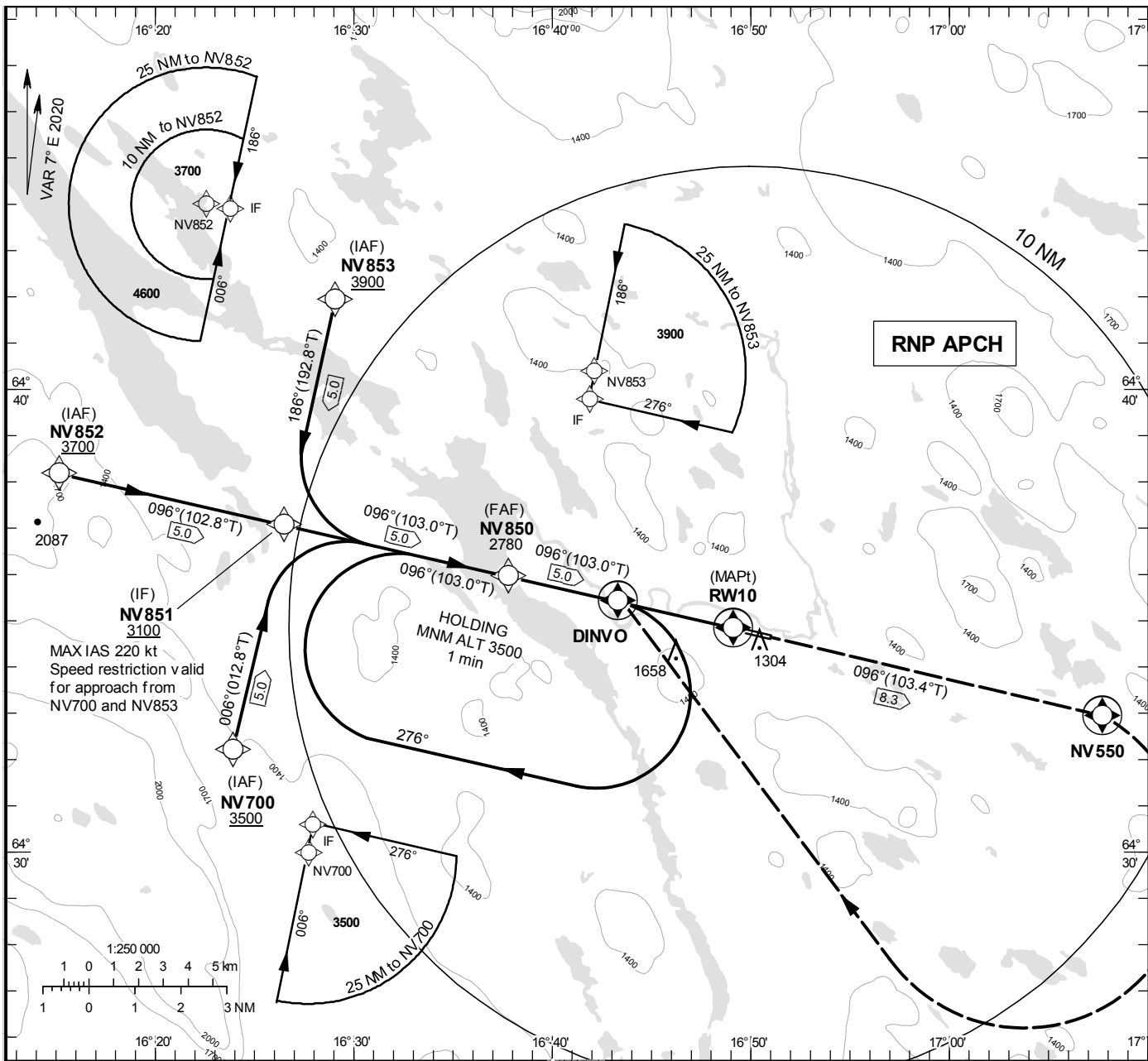
AIP SVERIGE/SWEDEN

**INSTRUMENT
APPROACH
CHART – ICAO**

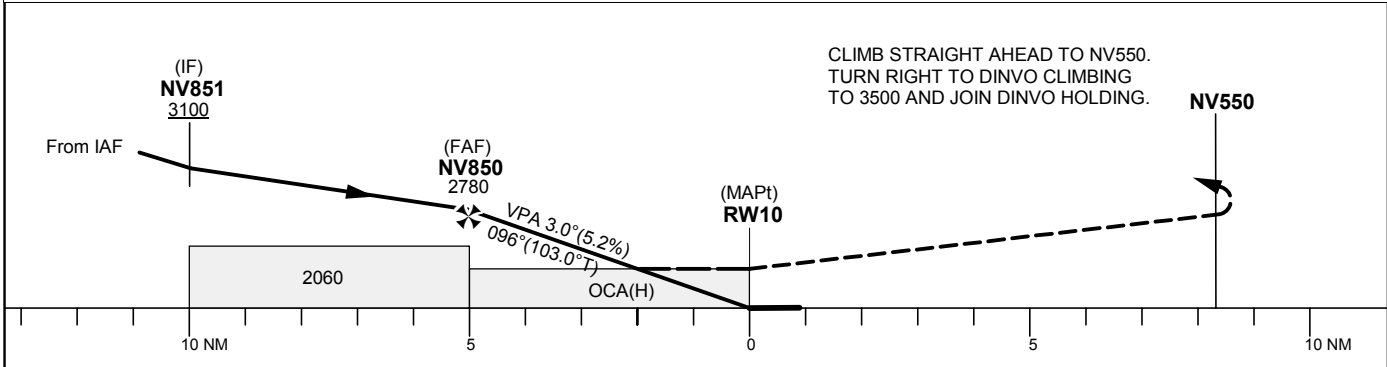
THR ELEV 1139 ft, AD ELEV 1141 ft
OCH are related to THR.
BRG are MAG (True).
ALT, HGT and ELEV in ft.

VILHELMINA
INFORMATION

122.555



TA 5000 ft AMSL RDH 50.0 ft



OCA (H)				Final approach	Distance FAF-MAPt 5.0 NM							
Cat of ACFT	A	B	C	Dist to RW10	5		4		3		2	
LPV	1435(296)	1447(308)	1455(316)	ALT	2780		2460		2140		1820	
LNAV	1670(540)			GS	kt	80	100	120	140	160		
				Rate of descent	ft/min	425	530	635	745	850		

CHANGE: Editorial

VILHELMINA**RNP RWY 10 via NV700**

Path Desc	Waypoint Identifier	Fly-over	Course °M(°T)	Dist (NM)	Turn Dir	Altitude	Speed	VPA/ RDH	Rec Navaid	Navigation Specification
IF	NV700	-	-	-	-	+3500	-	-	-	RNP APCH
TF	NV851	-	006°(012.8°)	5.0	-	+3100	-220	-	-	RNP APCH

RNP RWY 10 via NV852

Path Desc	Waypoint Identifier	Fly-over	Course °M(°T)	Dist (NM)	Turn Dir	Altitude	Speed	VPA/ RDH	Rec Navaid	Navigation Specification
IF	NV852	-	-	-	-	+3700	-	-	-	RNP APCH
TF	NV851	-	096°(102.8°)	5.0	-	+3100	-	-	-	RNP APCH

RNP RWY 10 via NV853

Path Desc	Waypoint Identifier	Fly-over	Course °M(°T)	Dist (NM)	Turn Dir	Altitude	Speed	VPA/ RDH	Rec Navaid	Navigation Specification
IF	NV853	-	-	-	-	+3900	-	-	-	RNP APCH
TF	NV851	-	186°(192.8°)	5.0	-	+3100	-220	-	-	RNP APCH

Path Desc	Waypoint Identifier	Fly-over	Course °M(°T)	Dist (NM)	Turn Dir	Altitude	Speed	VPA/ RDH	Rec Navaid	Navigation Specification
IF	NV851	-	-	-	-	+3100	-	-	-	RNP APCH
TF	NV850	-	096°(103.0°)	5.0	-	@2780	-	-	-	RNP APCH
TF	RW10	Y	096°(103.0°)	5.0	-	@1189	-	-3.00/50	-	RNP APCH
TF	NV550	Y	096°(103.4°)	8.3	R	-	-	-	-	RNP APCH
DF	DINVO	Y	-	-	-	-	-	-	-	RNP APCH
HM	DINVO	Y	096°(103.0°)	-	R	+3500	-	-	-	RNAV 1

FAS Data Block

RNP RWY 10

Input data

Operation Type	0
SBAS Provider	1 (EGNOS)
Airport Identifier	ESNV
Runway	10
Runway Letter	0 (None)
Approach Performance Designator	0
Route Indicator	
Reference Path Data Selector	0
Reference Path Identifier	E10A
LTP/FTP Latitude	643450.2000N
LTP/FTP Longitude	0164905.9700E
LTP/FTP Ellipsoidal Height (metres)	376.6
FPAP Latitude	643439.1800N
Delta FPAP Latitude (seconds)	-11.0200
FPAP Longitude	0165055.7300E
Delta FPAP Longitude (seconds)	109.7600
Threshold Crossing Height	50.0
TCH Units Selector	0 (feet)
Glidepath Angle (degrees)	3.00
Course Width (metres)	105.00
Length Offset (metres)	0
HAL (metres)	40.0
VAL (metres)	50.0

Output data

Data Block	10 16 0E 13 05 0A 00 00 01 30 31 05 B0 09 B7 1B 64 B7 37 07 B6 22 E8 A9 FF 80 59 03 F4 01 2C 01 64 00 C8 FA EF F7 9B A1
Calculated CRC Value	EFF79BA1

Required Additional Data

ICAO Code	ES
LTP/FTP Orthometric Height (metres)	347.2